

# Morne

## NIGHT UNITS

The perfect complements for a bedroom with a rock and gritty style, the Morne night tables are made of glossy lacquered wood combined with the python texture and the antique bronze finishing.



# Morne

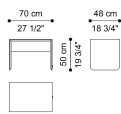
## NIGHT UNITS

Night table with structure in MDF, veneered in essence from the collection on the outside and lacquered matt Black on the inside, or completely lacquered in the matt or glossy finishings from the collection.

Drawer front in MDF covered in Python 3D Printed, or with Antique Bronze finishing. Inner cover in microfibre.

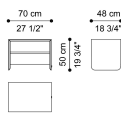
Shelf in bronzed glass.

Brass plate with RC monogram on night table side.



C.MOE.321.A

Night table with 1 drawer



C.MOE.321.B

Night table with 2 drawers

Standard features

L 70 D 48 H 50 cm  
L 27.56 D 18.9 H 19.69 in

Standard features

L 70 D 48 H 50 cm  
L 27.56 D 18.9 H 19.69 in

# Morne

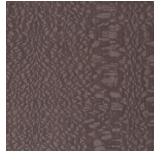
## NIGHT UNITS

### STRUCTURE

#### Wood



Oak  
Veneered  
Dyed Wengé



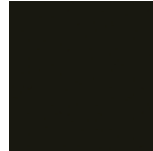
Rose  
Carbalho  
Veneered



Grey  
Carbalho  
Veneered



Eucalyptus  
Frisé  
Veneered



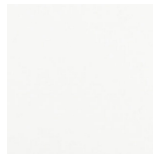
Black  
Lacquered



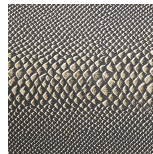
Ivory  
Lacquered



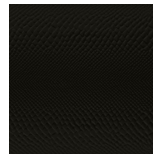
Desert  
Lacquered



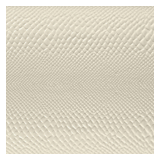
White  
Lacquered



Patinated  
Bronze  
Python 3d  
Printed



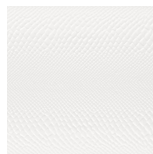
Black  
Lacquered  
Python 3d  
Printed



Ivory  
Lacquered  
Python 3d  
Printed



Desert  
Lacquered  
Python 3d  
Printed



White  
Lacquered  
Python 3d  
Printed



Antique  
Bronze

#### Glass



Bronzed  
Glass